

HOOKS



ML4161SS_HOOK

Hat and Coat Hook - Concealed Fix in Polished Stainless Steel

Specification

Material	#304 Stainless Steel
Finish	Polished Stainless Steel
Mounting	Concealed Screw Fix via Ferrule
Dimensions	20mmW x 35mmH x 55mmD
Note	Use Dress Trim ML6044PSS for soft wall fixing

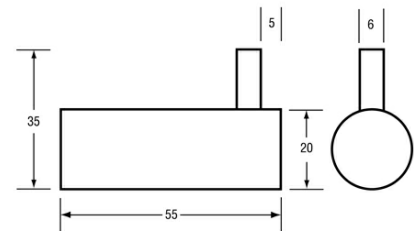
It is recommended that any individual unit is installed whereby it clears any other fixtures by at least 150mm and not carry loads any greater than 8kg

* This unit is accessible compliant when installed in accordance with AS1428.1. guidelines.



Downloads & Resources

- Care & Maintenance
- Installation instructions
- Associated Videos
- Stainless Steel Cleaning & Maintenance



The photographs and line drawings of the products presented above are representational only. Metlam Australia Pty Ltd reserves the right to, and from time to time, make changes and improvements in design and dimensions.